

Disabling Driver Signature Enforcement In Windows 8 and 8.1

Updated: July 20, 2013

Windows 8 has a security feature which will not allow you to install Unsigned Drivers or the drivers without digital signature.

If you are having trouble on your Windows PC because of this feature then you can simply Disable Driver Check Enforcement on your Computer.

To re-enable Driver Signature Enforcement, simply reboot your computer

First, press "**win + I**" to launch the charm bar, and click "**Change PC Settings**" at the bottom.

Note 1: This is a onetime temporary fix to install Unsigned Drivers.

Settings

Desktop

Control Panel

Personalization

PC info

Help


NETGEAR51


32


Brightness


Notifications

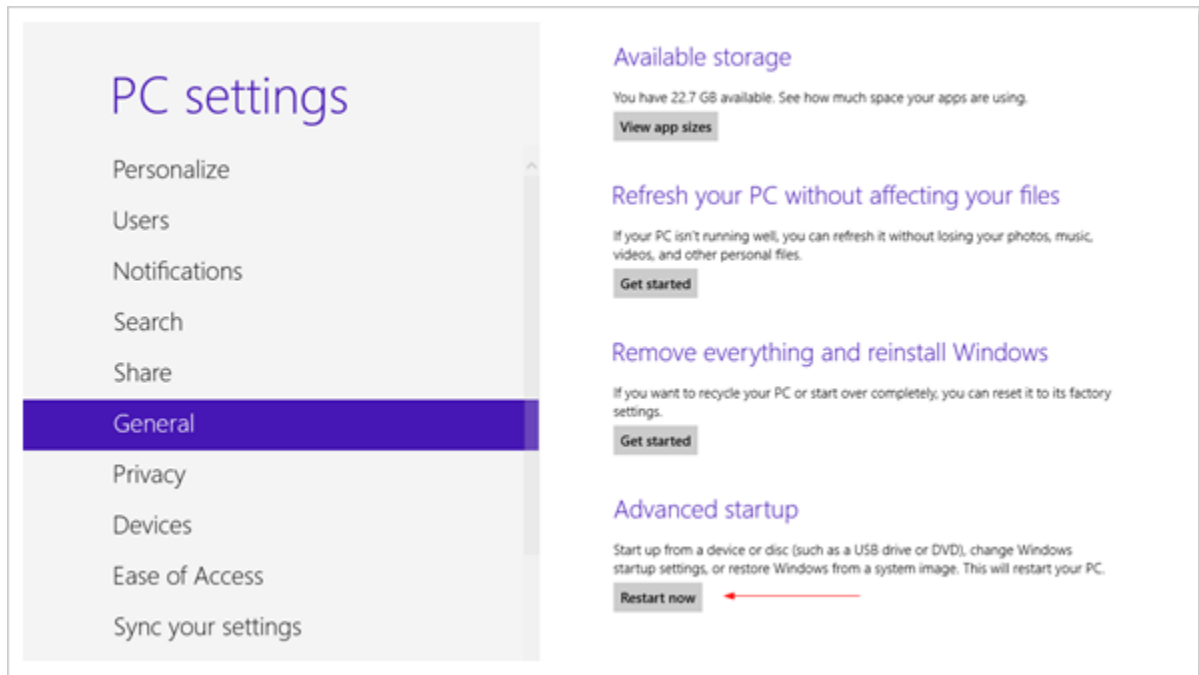

Power


Keyboard

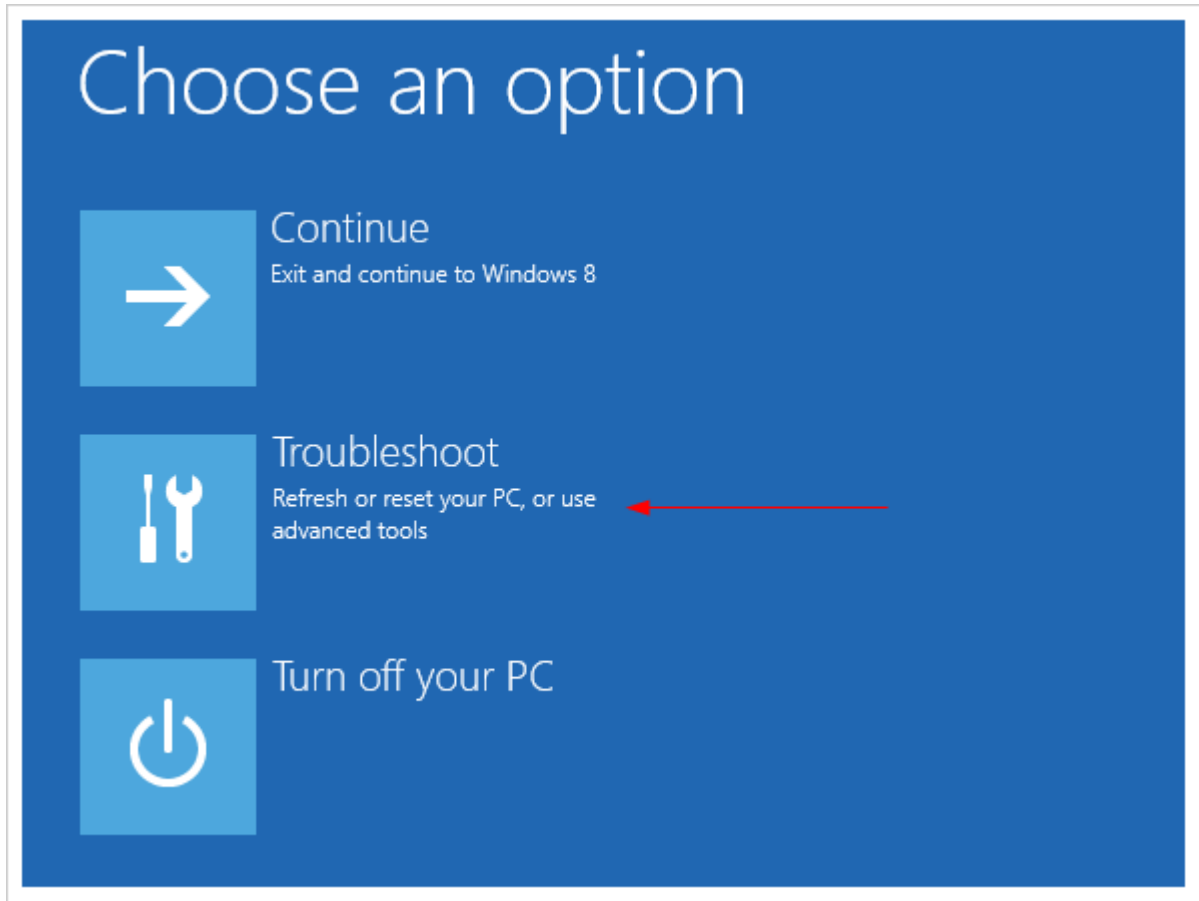
Change PC settings

Then, go to "**General**", and scroll to the bottom of the page, click "**Restart Now**" button under "**Advanced Startup**" section.

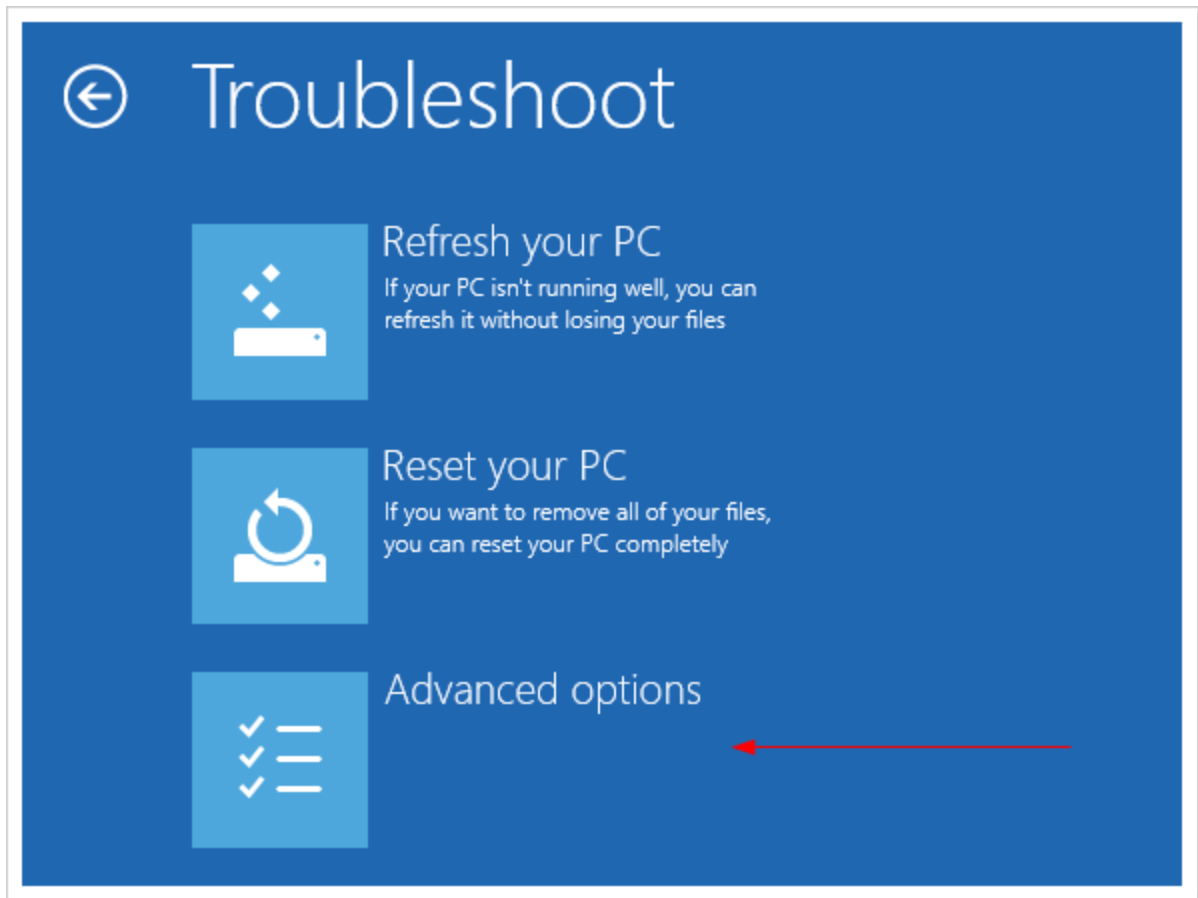
Remember to save all your work first before clicking it.



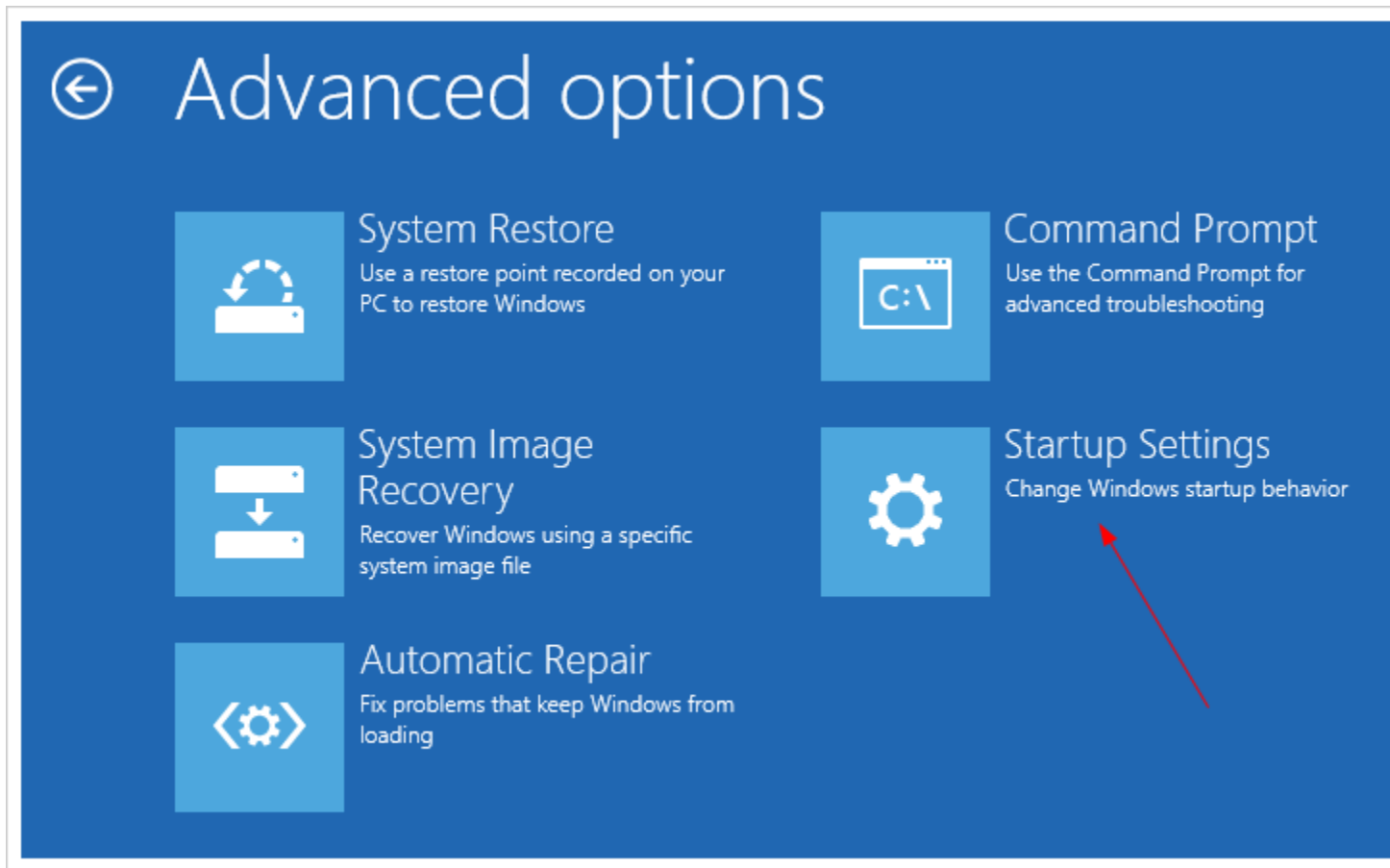
The computer reboots to a "Startup Menu", then click "**Troubleshoot**"



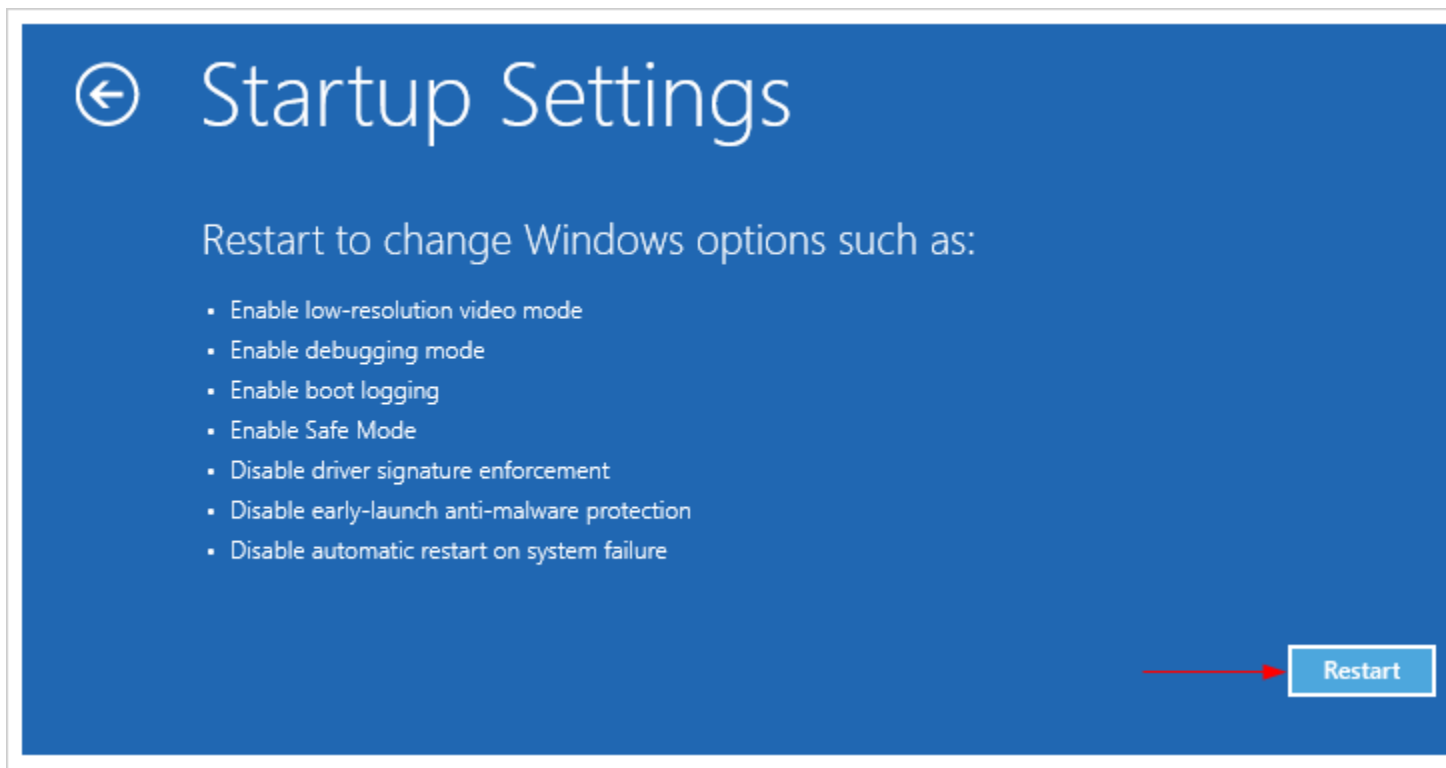
Click "**Advanced Options**" at next screen



Click "**Startup Settings**" at next screen



Click "**Restart button**" at next screen



When your computer reboots another menu will appear.


Item# 7) is to "**Disable driver signature enforcement**".

Press **number 7 or F7** to continue booting to Windows 8 with digital signature enforcement disabled.

Startup Settings

Press a number to choose from the options below:

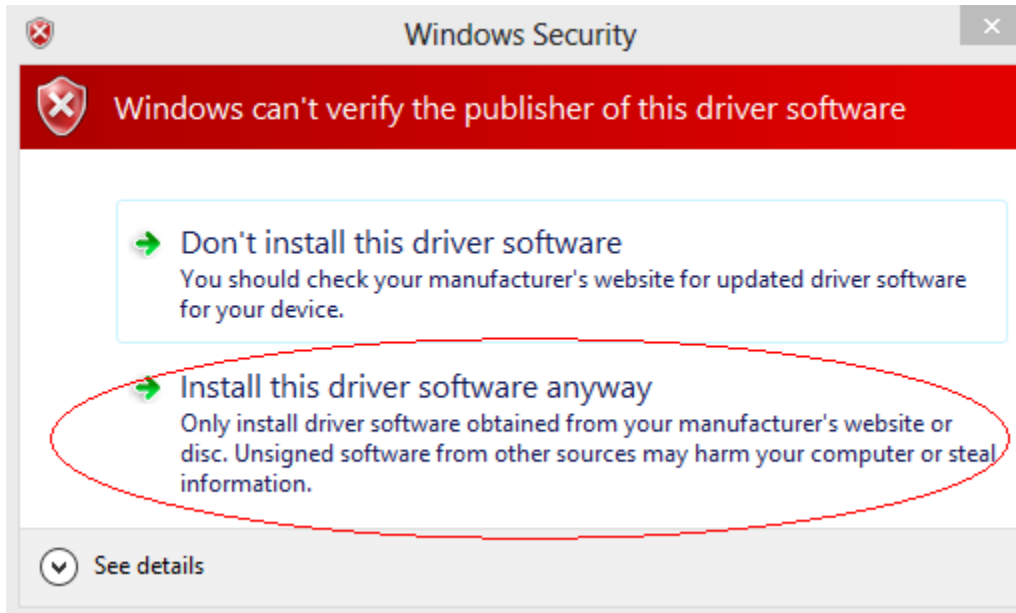
Use number keys or functions keys F1-F9.

- 1) Enable debugging
- 2) Enable boot logging
- 3) Enable low-resolution video
- 4) Enable Safe Mode
- 5) Enable Safe Mode with Networking
- 6) Enable Safe Mode with Command Prompt
- 7) Disable driver signature enforcement 
- 8) Disable early launch anti-malware protection
- 9) Disable automatic restart after failure

Press F10 for more options

Press Enter to return to your operating system

Now when you install the driver you will get the following prompt, select "**Install this driver software anyway**"



To re-enable Driver Signature Enforcement, simply reboot your computer

Additional Information:

You can permanently enable Test Mode () by opening an **Elevated Command Prompt** and typing the following commands, then rebooting:

Code:

```
bcdedit -set loadoptions DISABLE_INTEGRITY_CHECKS
bcdedit -set TESTSIGNING ON
```

To turn it off again, use these commands:

Code:

```
bcdedit -set loadoptions ENABLE_INTEGRITY_CHECKS
bcdedit -set TESTSIGNING OFF
```

Standard disclaimer that by enabling Test Mode you are opening yourself to potential maliciousness, I'm going to assume that if you're going to do this you'll have the common sense to verify things before installing them.

References:

<http://wiki.openpilot.org/display/Doc/Disabling+Driver+Signature+Enforcement+In+Windows+8>

<http://team-xecuter.com/forums/showthread.php/90819-Windows-8-Disable-Driver-Signature-Enforcement>

<https://social.technet.microsoft.com/Forums/en-US/ed9425fe-15d9-43bc-bbd4-62a60cd6c109/disable-disable-driver-signature-enforcement-in-windows-8-release-preview->