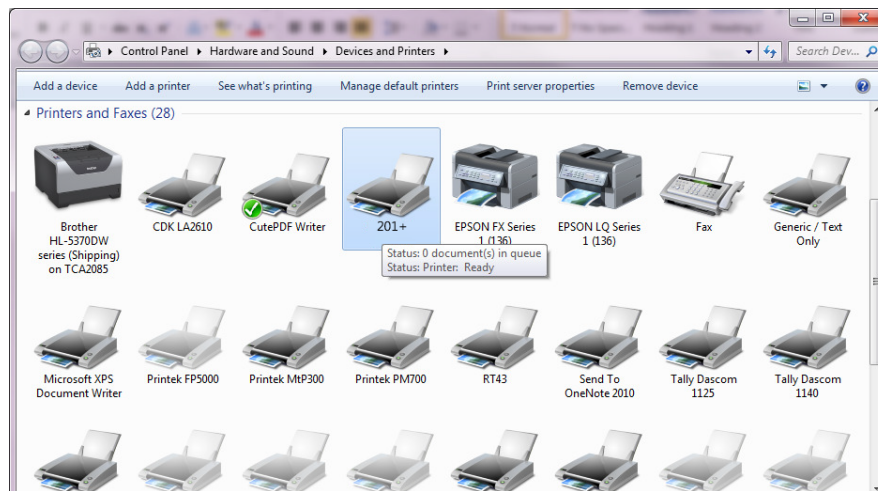


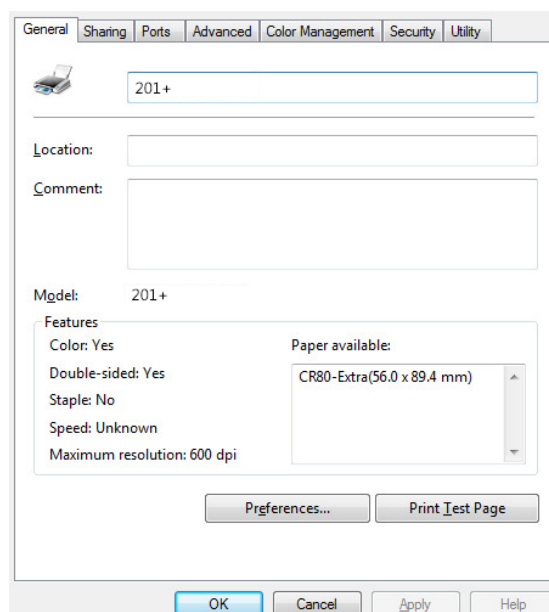
Firmware Update to 201+

Proper Driver installation is needed before updating the 201+ Printer can begin with the selection of the correct USB port or Ethernet connection.

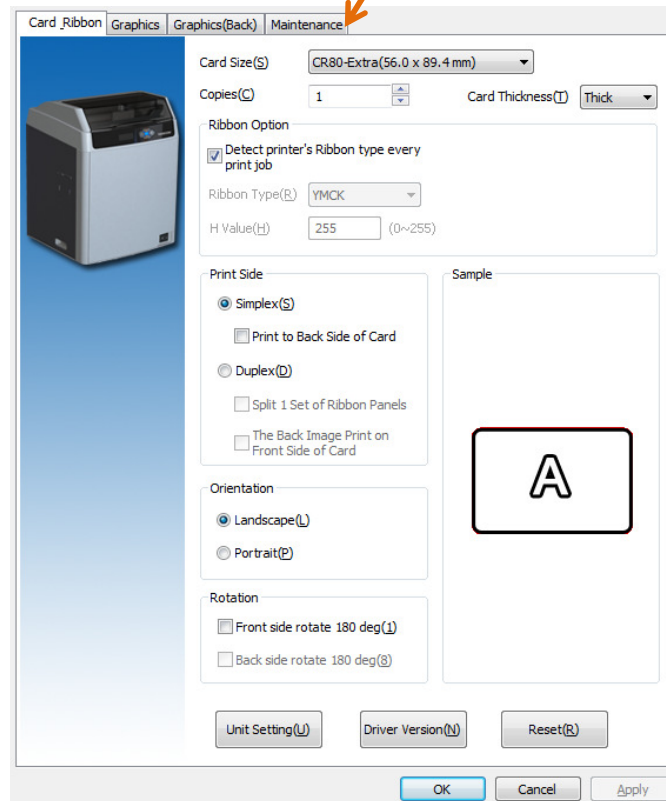
- 1) Click "Devices and Printers" in control panel



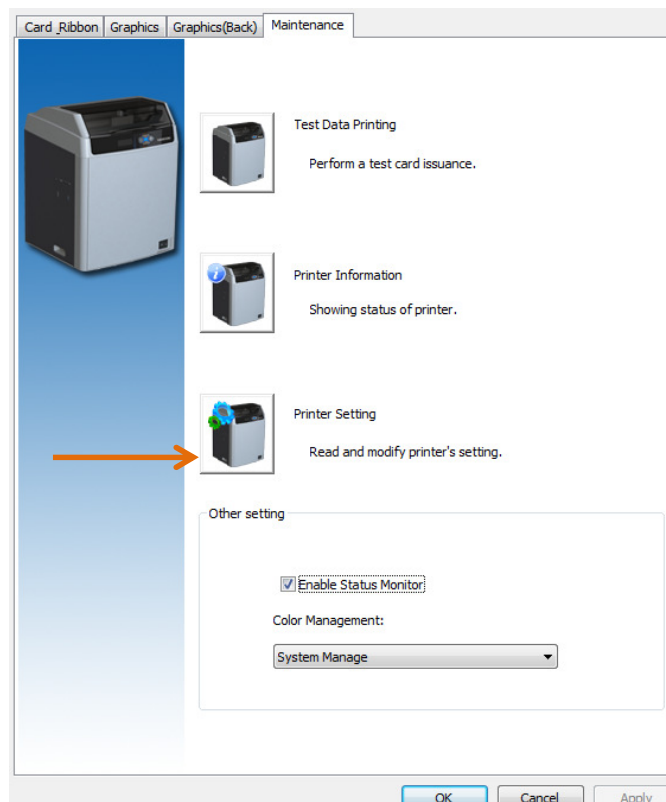
- 2) "Right click" on the Driver to select the "Printer Properties" of the 201+ Printer then click on the Preferences button.



- 3) At the 201+ Printing Preferences page, click on the Maintenance tab



- 4) Click on the Printer Settings button.

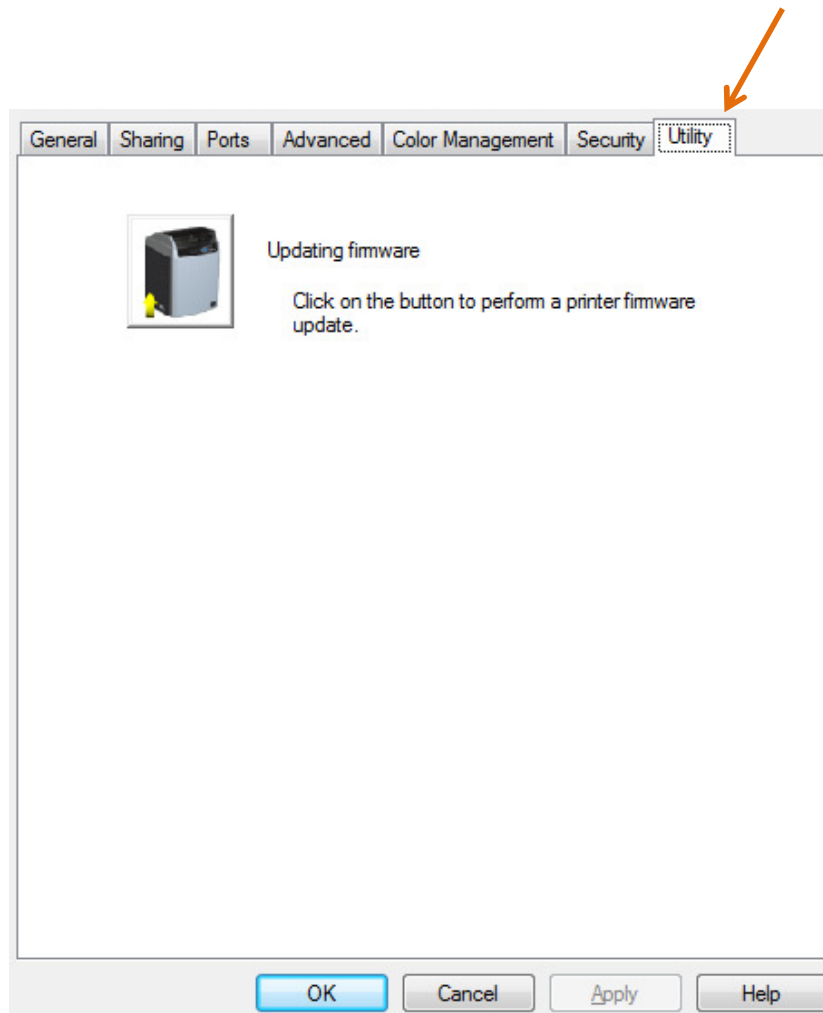


- 5) From the list of Parameter Items, select **Version Info** to verify what the current Firmware the Printer has.

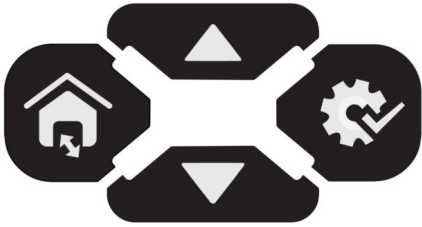
The screenshot shows a printer's configuration interface. On the left, a tree view under 'Parameter Item:' has 'Version Info' highlighted. The main area displays 'Printer Info' with 'Head Temperature: 41.00 °C' and 'Heater roller 203.60 °C'. Below this, 'Main Status' is 'Ready to Print' with 'No Warning'. A 'Parameter List' table shows various firmware versions. On the right, 'Printer Menu Mode' has 'User Mode' selected. At the bottom right are buttons for 'Read', 'Write', 'Restore All', and 'Exit'.

Item	Status	Units	Attribute
Main Version	01.00.00.03		R
SubFW Version	01.07.00.22		R
Main Boot	01.90.00.00		R
Sub Boot1	01.10.00.00		R
Sub Boot2	01.80.00.00		R
FPGA Version	01.08.01		R

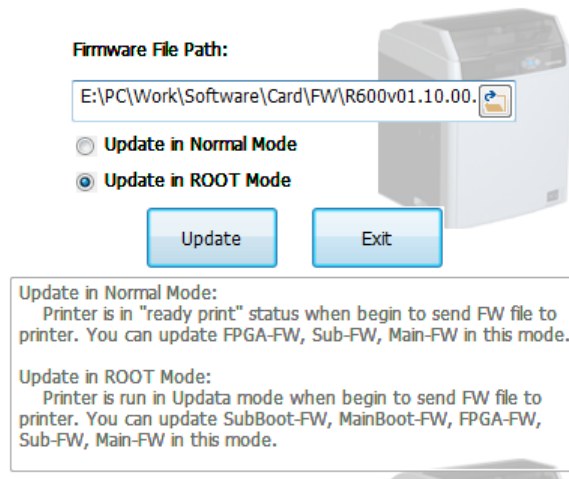
- 6) Click on Exit and then OK to get back to the Printer Properties page to select the Utility tab.



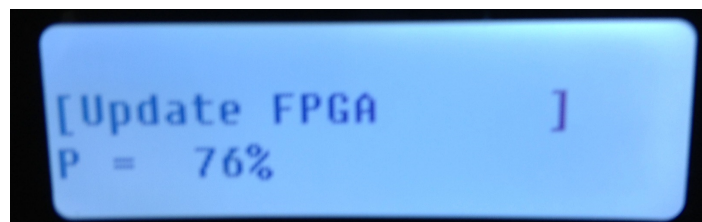
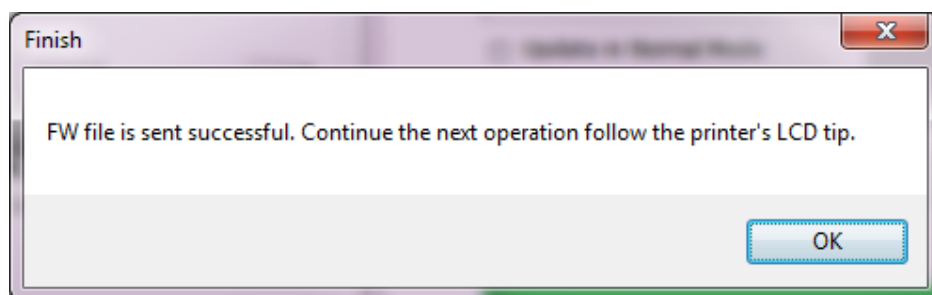
- 7) Turn off the printer. While holding “Home” and “Set” buttons, turn the power back On. Do not release the “Home” and “Set” button until the printer’s display shows “Update mode”.



- 8) Start with the SubBT1 file, select it then click OPEN to then click on the UPDATE button.



- 9) The PC shows FW File is sent successfully and the Printer will display a percentage of load to the Firmware then self-power cycle to then come up to a READY state.

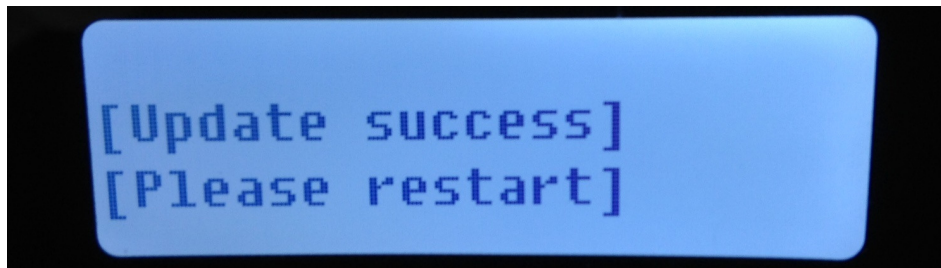


- 10) Press EXIT to back out of the Firmware Update Utility.

- 11) While in the Ready state on the Printer, click on the Utility button to go back into the Update Firmware. Select the "Update in ROOT Mode", browse and select the next Firmware File to send to the Printer. Power off the Printer, press and hold the HOME and SET buttons as you power it back on to get back into Update Mode on the display of the Printer.

Continue with loading of the SubBT2 file, followed by MainBT, then impl_P1, with SubFw next and ending with the Main Firmware (named OSv..).

- 12) Once the Printer shows Update successful Please Restart, the Firmware Update is completed.



You can verify that the Firmware has been updated by exiting the Firmware Update Utility and with the Printer back in REDAY state, go to the GENERAL tab of the Printer Driver, selecting the Preferences button, select the Maintenance tab, Printer Settings button to select the VERSION INFO under the Parameter Items to then view the various Firmware levels, as outlined in steps 3,4 and 5 above.