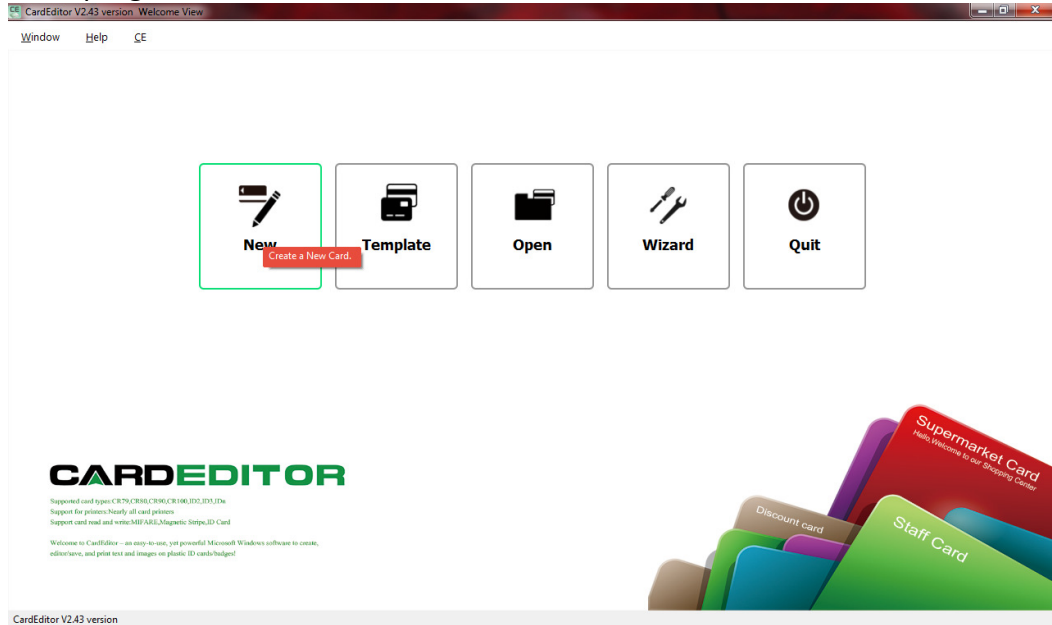
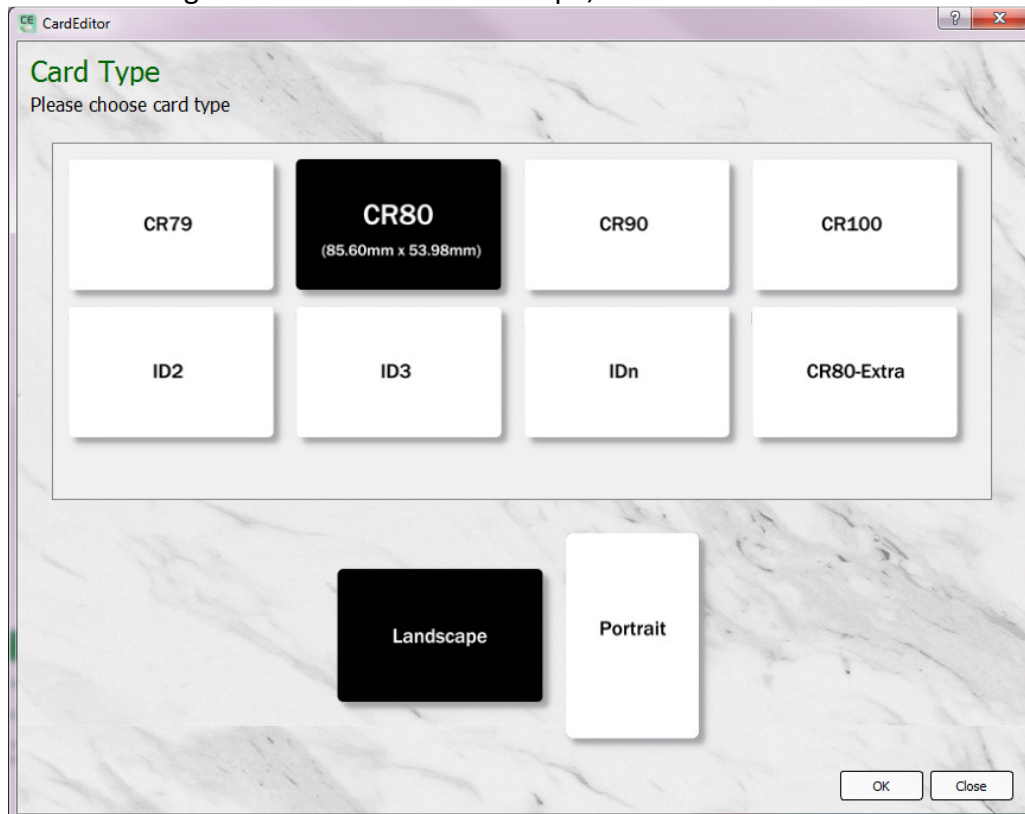


Generating a Test Card in Card Editor

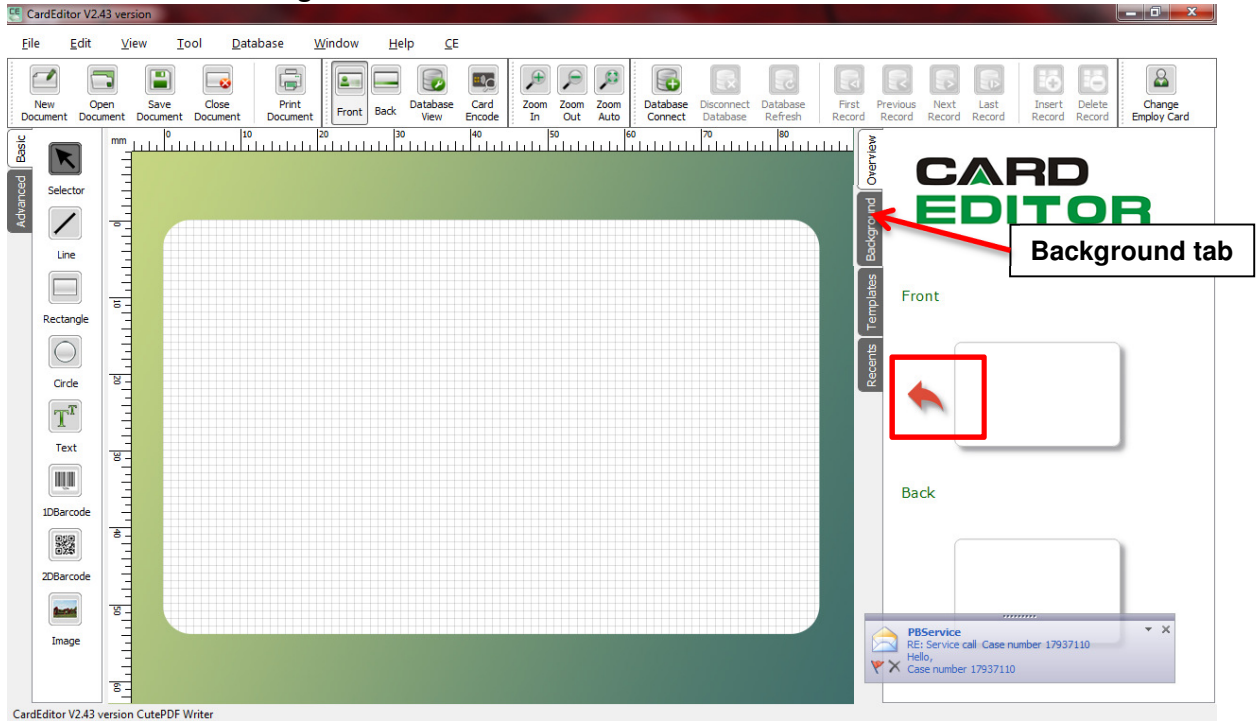
- 1) Start Card Editor program and select NEW.



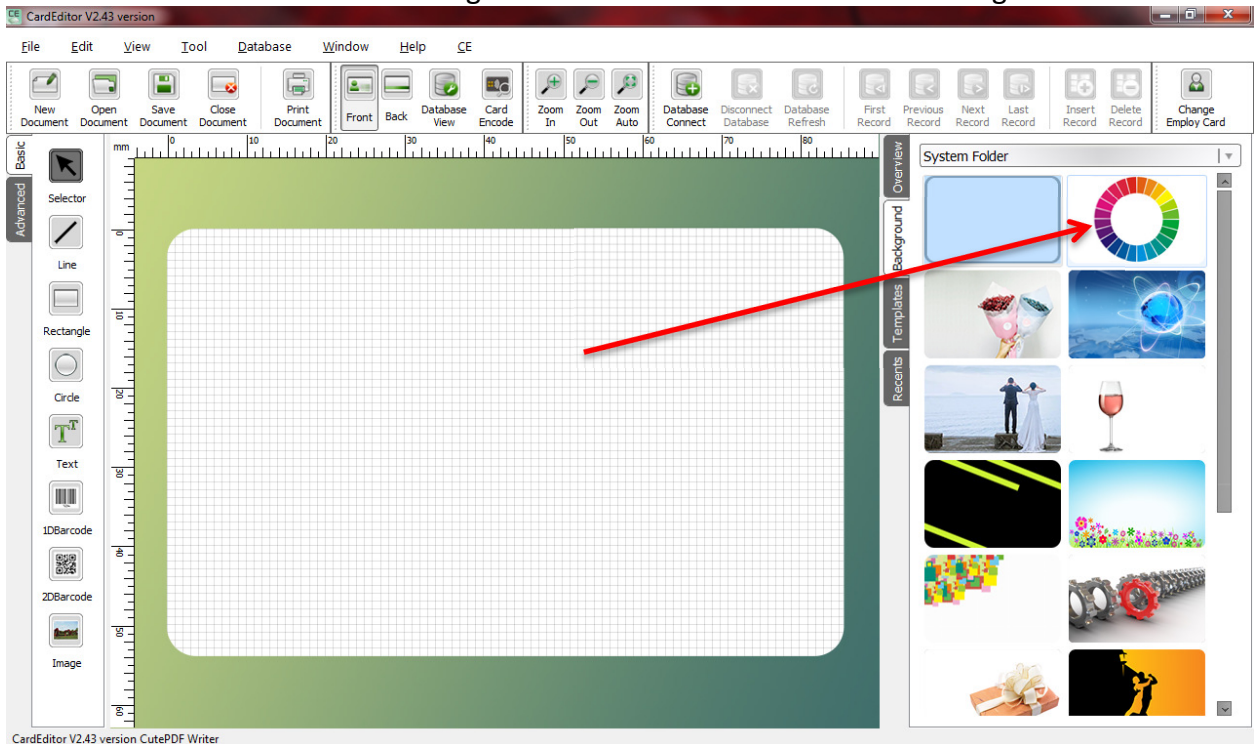
- 2) Go with the default settings of CR80 Card and Landscape, click on the OK button.



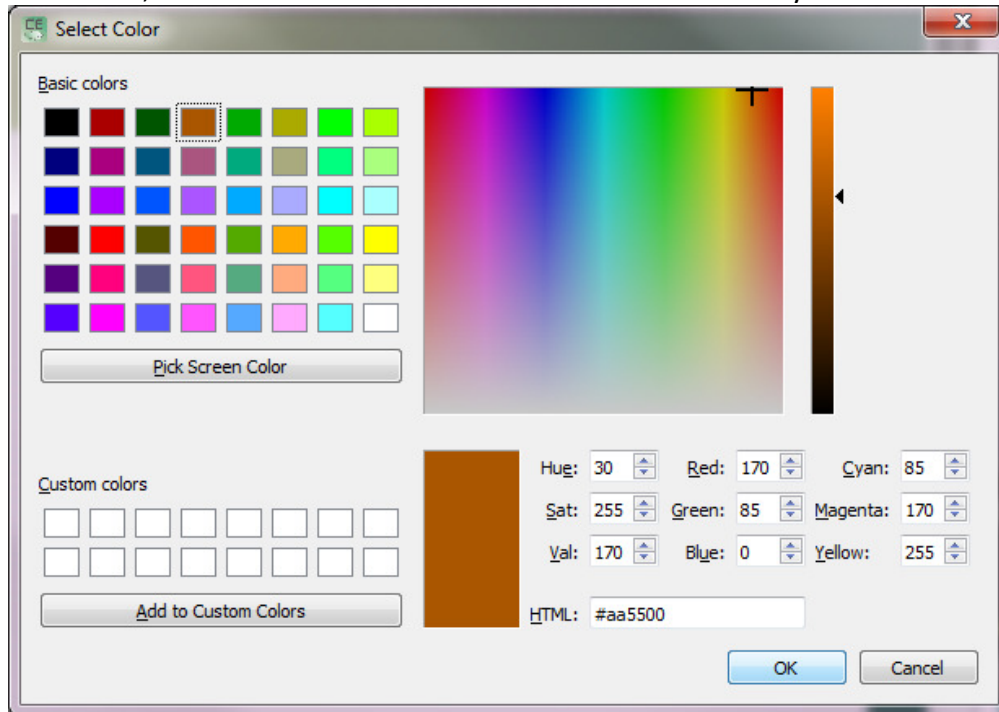
- 3) The Red Arrow shows which side of the Card you can produce for. To make a good test card, select the **BACKGROUND** tab on the righthand side.



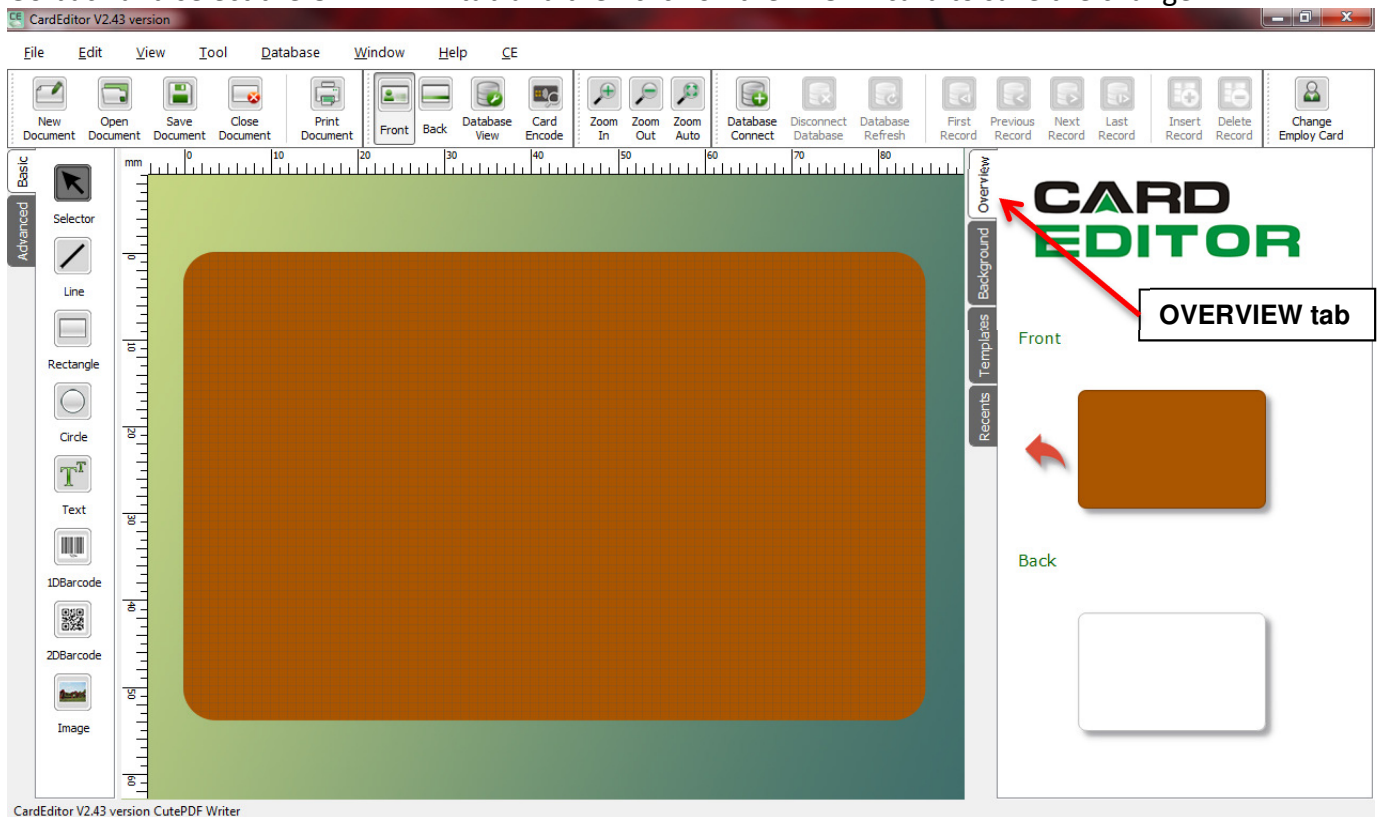
- 4) Select the Color Wheel shown on the right hand side in the list of available backgrounds.



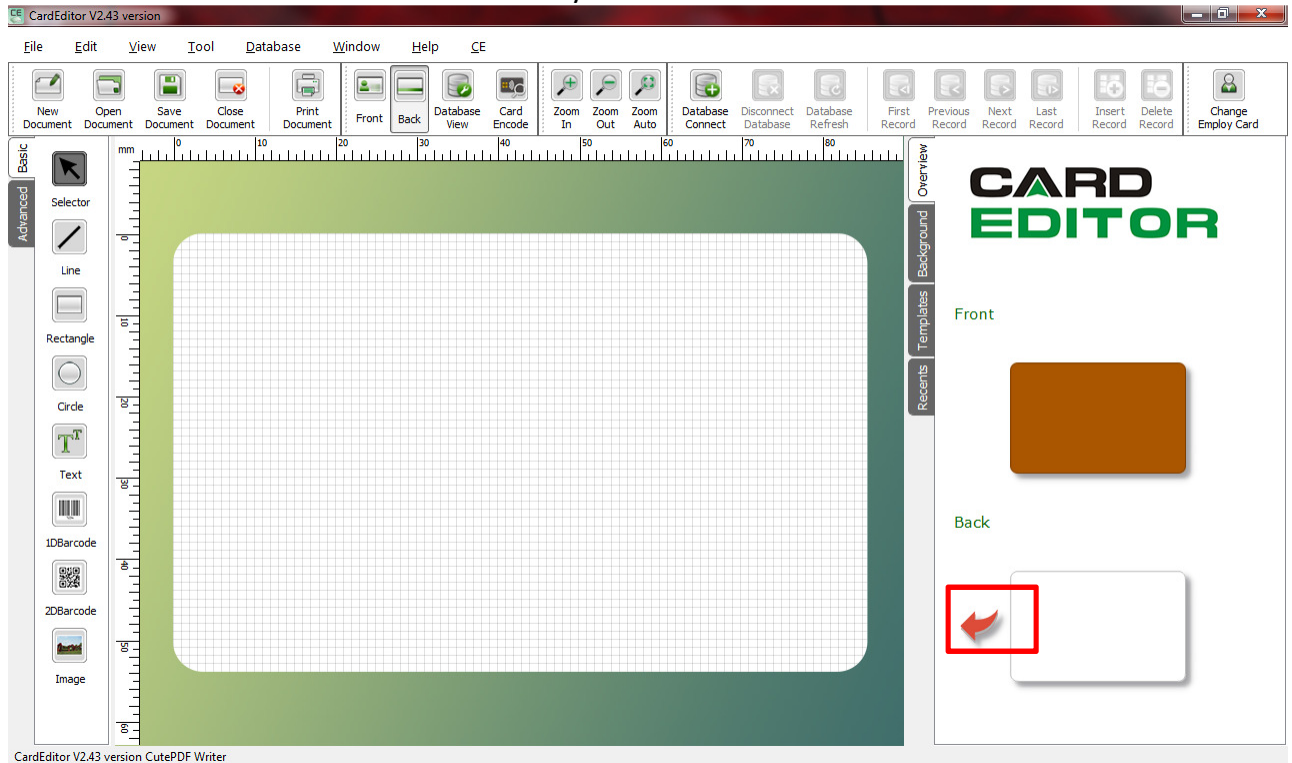
- 5) Select the desired color, from the Basic Colors or select the Custom color you want to use then click ok.



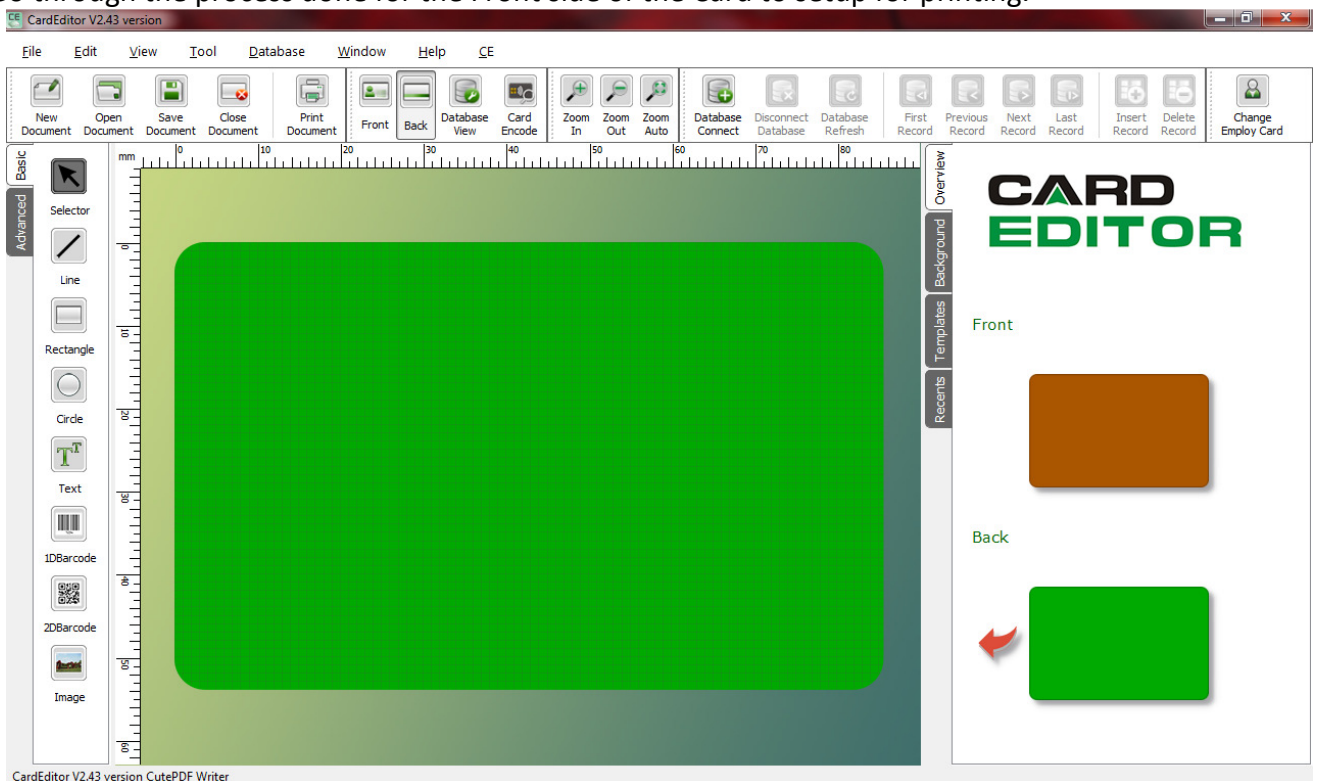
- 6) Go back and select the OVERVIEW tab and then click on the FRONT card to save the change.



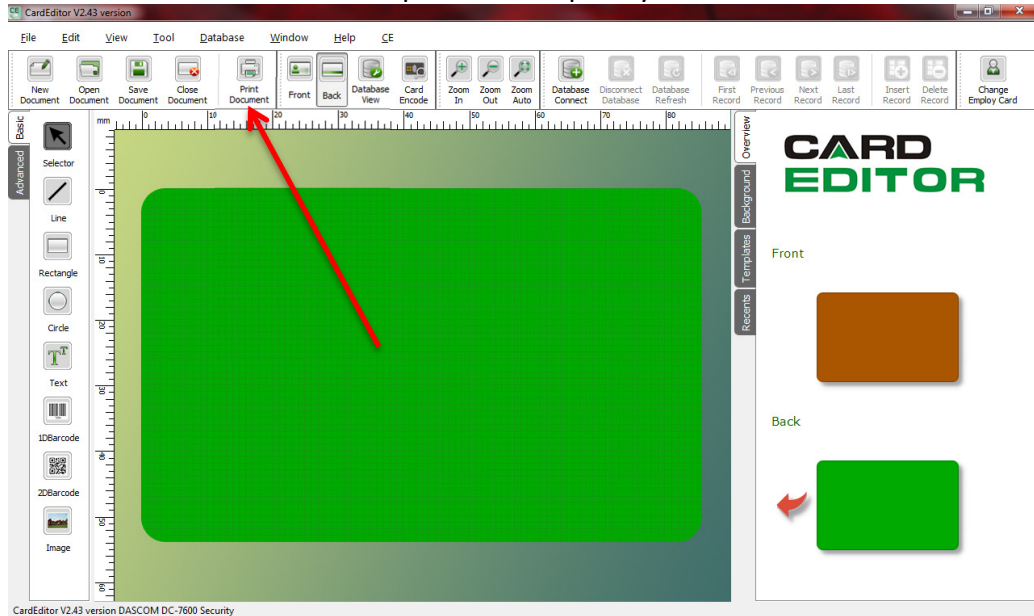
7) Click to switch to the BACK Card side to modify it –



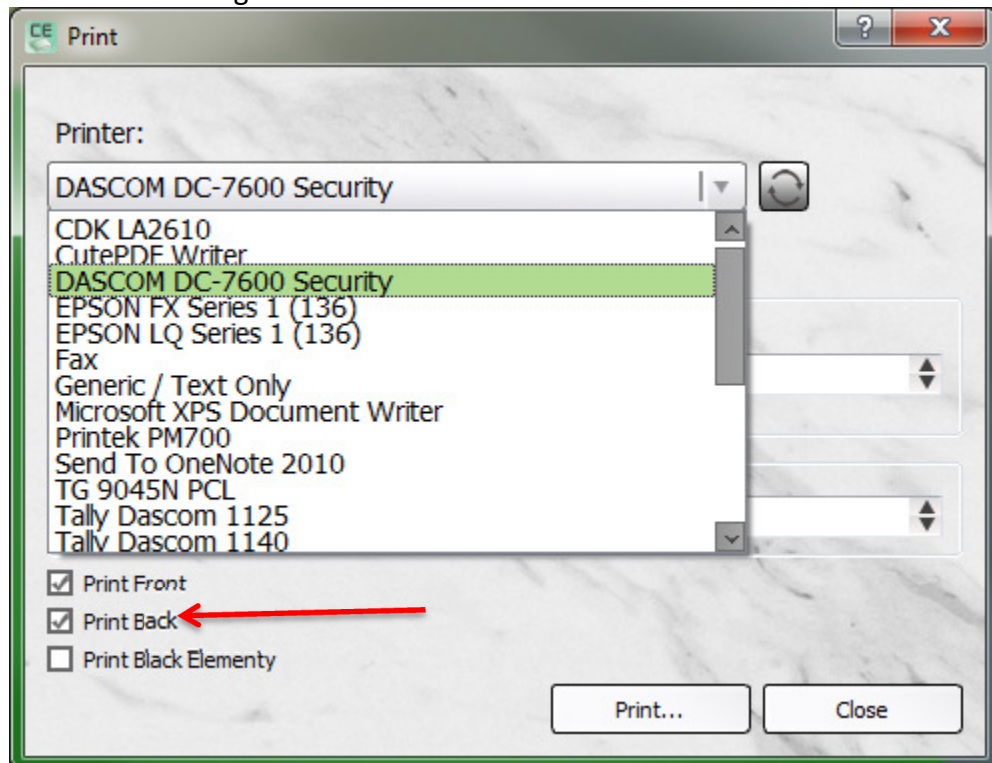
8) Go through the process done for the Front side of the Card to setup for printing.



9) Click on the Print Document tool on the top Toolbar to print your Card.



10) Click on the Drop arrow to select your 201+ Printer from the list and make sure to check the “Print Back” parameter before clicking on the PRINT button.



Check the results of the Card when finished.