

How to update firmware

This procedure provides an example of how to update the firmware of PR-C101. It is the same for PR-C151 and PR5350.

IMPORTANT

The computer must have a printer driver installed that can be directly connected to the printer that you want to update. Please close all other running application software.

You cannot update more than one printer at the same time. Please update one by one.

Do not turn off the printer or unplug the cable during the update. This may cause a malfunction.

1 Unzip the downloaded firmware zip file.

2 Confirm the printer is turned on and that your computer is connected to the printer.

3 View [Device and Printer].

Windows 10:

[Start]→[Windows System tools]→[Control Panel]→[Hardware and Sound]→[Device and Printer]

Windows 8.1:

From the Desktop charms, [Setting]→[Control Panel]→[Hardware and Sound]→[Device and Printer]

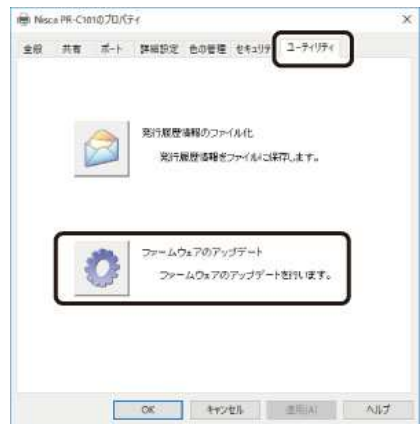
Windows 7/Windows Server 2008 R2:

[Start]→[Device and Printer]

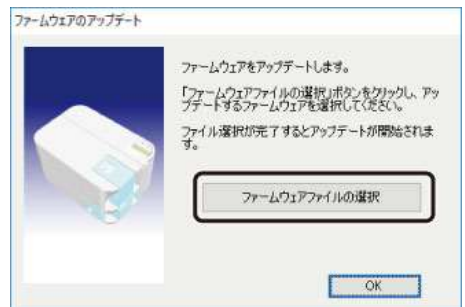
4 Right-click the printer icon and select [Printer Properties].

The printer properties screen appears.

5 Click [Utilities]tab and click [Update Firmware].

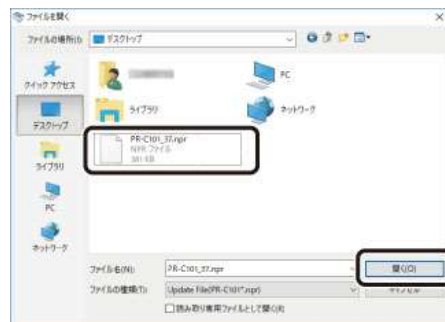


6 Click [Select Firmware File].



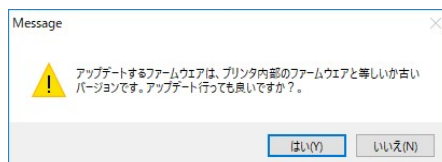
7 Select the firmware file (*.npr) and click [Open].

- Start the firmware update.
- When the update is complete, the printer will restart automatically.



✔ IMPORTANT

- Do not turn off the printer or unplug the cable until the update is complete. They are the cause of failure.
- If you select a file that is older or the same version, a message is displayed.
- If you want to stop the update, click [No] and turn on the printer again.



8 When the update is complete, click [OK].

